

Regent pumps



Minorflow

End suction & In-line
Pumps
centrifugal

End Suction Pumps

Minorflow

Regent Minorflow pumps are close coupled end suction single stage centrifugal motor pumps. They provide reliable high performance from a compact unit and are suitable for a broad range of applications. A special viton seal is fitted as standard and can resist liquid temperatures up to 120°C.

The Regent Minorflow is available in a broad range of materials and sizes. It comes with a totally enclosed fan cooled non-overloading motor and features a back pullout design for easy maintenance.

Design Features:

TEFC Motor

Totally enclosed fan cooled non-overloading motors are fitted as standard to provide trouble free operation. Option Available: special motor enclosures.

Hi-Temp Seal

A viton seal is fitted as standard to resist liquid temperatures to 120°C.

Variable Discharge Position

The casing may be mounted in alternative discharge positions (standard supplied horizontally overshot).

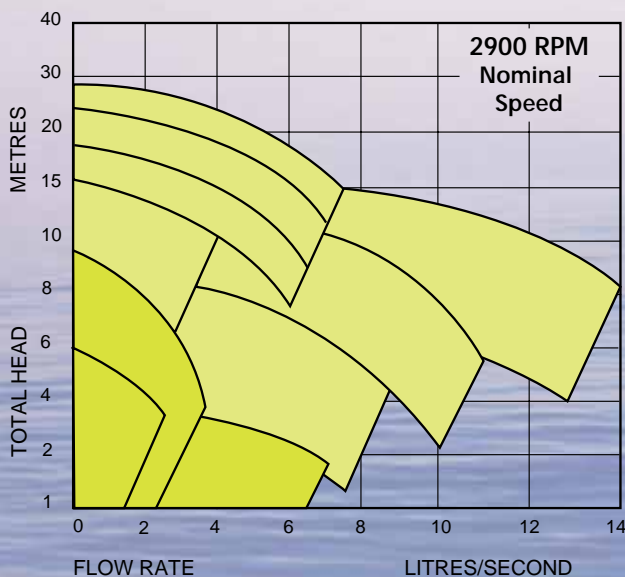
Back Pullout Design

The complete rotating element including motor may be withdrawn from the rear without disturbing pipework.

Compact Design

Being close-coupled to the electric motor Minorflow Pumps utilise minimum floor space.

Performance



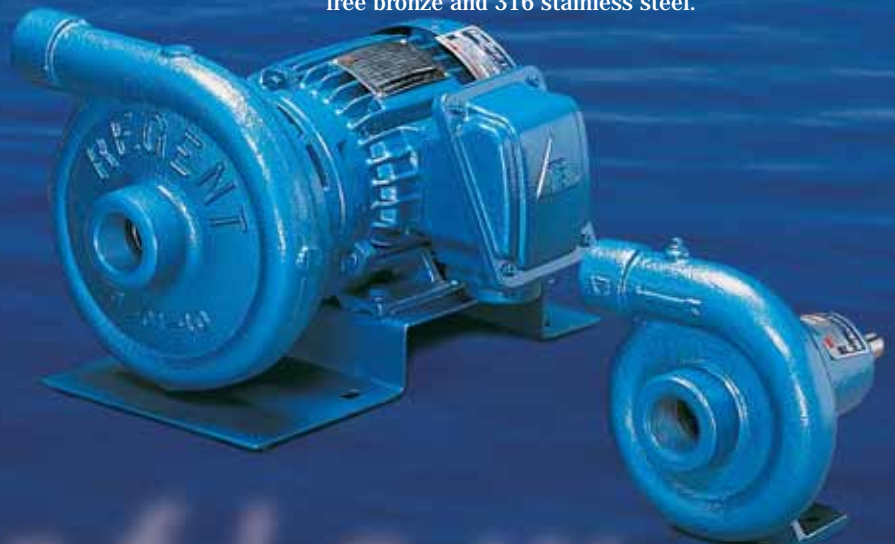
Applications:

- * Cooling Towers
- * Fluid Transfer
- * Effluent
- * Machine Cooling
- * Hot Water Circulation
- * Industrial Applications
- * Airconditioning

The compact close-coupled design and rugged construction of Minorflow end-suction pumps make them ideal for use in a multitude of applications where a reliable workhorse is required.

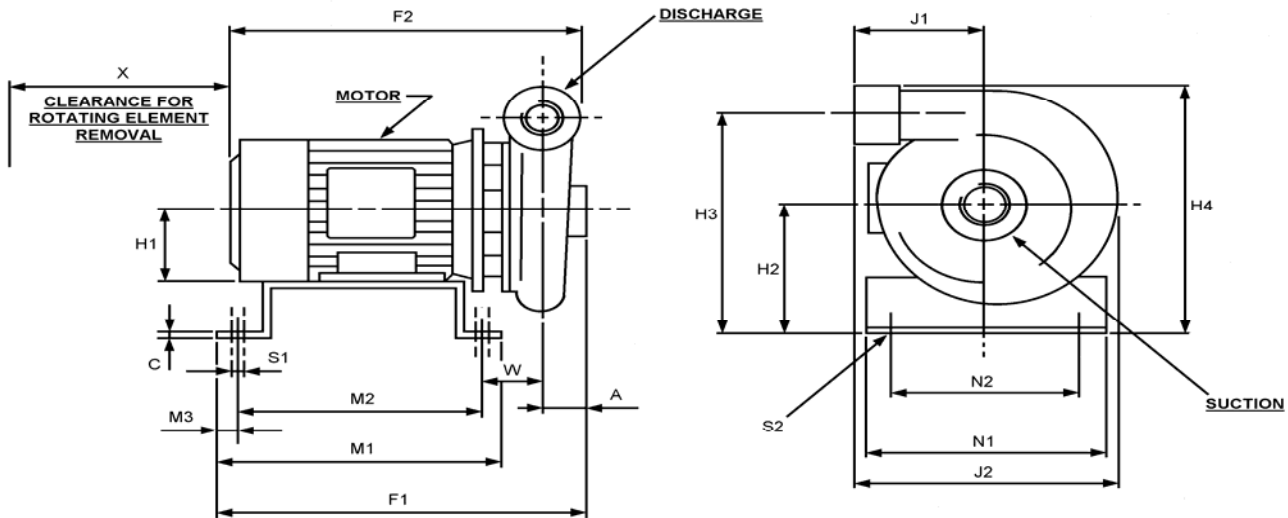
Materials:

Standard construction is cast iron with a bronze impeller and stainless steel shaft. Options include all cast iron, bronze, zinc-free bronze and 316 stainless steel.



Minorflow

SCREWED MINORFLOW DIMENSIONS (Dimensions may change due to availability of motors. Do not scale).



| MODEL | MOTOR | A | C | F1 | F2 | H1 | H2 | H3 | H4 | J1 | J2 | M1 | M2 | M3 | N1 | N2 | S1 | S2 | W | X | IN-LET | OUT-LET | KG | |
|--------|---------|----|---|-----|-----|-----|-----|-----|-----|-----|-----|-----|-----|----|-----|-----|----|-----|-----|-----|------------|------------|-----|-----|
| 25-194 | 0.75-4P | 64 | 5 | 425 | 343 | 80 | 160 | 285 | 310 | 150 | 287 | 303 | 243 | 26 | 194 | 154 | 12 | M12 | 70 | 105 | 1 1/2" BSP | 1" BSP | 37 | |
| 25-216 | 1.1 -4P | | | | 407 | 90 | 170 | 295 | 320 | | | | | | | | | | 115 | | | | 43 | |
| 25-160 | 4.0 -2P | | | 482 | 112 | 192 | 317 | 342 | 121 | | | 70 | | | | | | | | | | | | |
| 25-184 | 5.5 -2P | | | 581 | 536 | 132 | 212 | 337 | 362 | | | 150 | 96 | | | | | | | | | | | |
| 25-216 | 7.5 -2P | | | | 98 | | | | | | | | | | | | | | | | | | | |
| 40-171 | 0.75-4P | 61 | 5 | 425 | 323 | 80 | 160 | 276 | 310 | 135 | 264 | 303 | 243 | 26 | 194 | 154 | 12 | M12 | 68 | 105 | 2" BSP | 1 1/2" BSP | 33 | |
| 40-190 | 1.1 -4P | | | | 377 | 90 | 170 | 286 | 320 | | | | | | | | | | 113 | | | | 40 | |
| 40-154 | 4.0 -2P | | | 481 | 112 | 192 | 308 | 342 | 120 | | | 50 | | | | | | | | | | | | |
| 40-171 | 5.5 -2P | | | 576 | 535 | 132 | 212 | 328 | 362 | | | 149 | 74 | | | | | | | | | | | |
| 40-190 | 7.5 -2P | | | | 101 | | | | | | | | | | | | | | | | | | | |
| 40-225 | 2.2 -4P | 76 | 5 | 560 | 468 | 100 | 180 | 317 | 351 | 186 | 352 | 402 | 342 | 26 | 304 | 256 | 12 | M12 | 120 | 105 | 2" BSP | 1 1/2" BSP | 73 | |
| 40-254 | 3.0 -4P | | | | | | | | | | | | | | | | | | | | | | 75 | |
| 50-152 | 0.75-4P | 68 | 5 | 434 | 333 | 80 | 160 | 270 | 307 | 168 | 297 | 303 | 243 | 26 | 194 | 154 | 12 | M12 | 73 | 160 | 2 1/2" BSP | 2" BSP | 35 | |
| 50-171 | 1.1 -4P | | | | 387 | 90 | 170 | 280 | 317 | | | | | | | | | | 118 | | | | 42 | |
| 50-190 | 1.5 -4P | | | | 412 | | | | | | | | | | | | | | 154 | | | | 45 | |
| 50-155 | 5.5 -2P | | | 578 | 568 | 132 | 212 | 322 | 359 | | | 180 | 98 | | | | | | | | | | | |
| 50-175 | 7.5 -2P | | | | 402 | 342 | 304 | 256 | 123 | | | 102 | | | | | | | | | | | | |
| 50-190 | 11.0-2P | | | | 646 | 160 | 240 | 350 | 387 | | | 140 | | | | | | | | | | | | |
| 50-203 | 2.2 -4P | 76 | 5 | 578 | 481 | 100 | 180 | 333 | 373 | 189 | 360 | 402 | 342 | 26 | 304 | 256 | 12 | M12 | 123 | 105 | 2 1/2" BSP | 2" BSP | 65 | |
| 50-229 | 3.0 -4P | | | | | | | | | | | | | | | | | | | | | | 130 | 68 |
| 50-254 | 4.0 -4P | | | | | | | | | | | | | | | | | | | | | | 500 | 112 |